

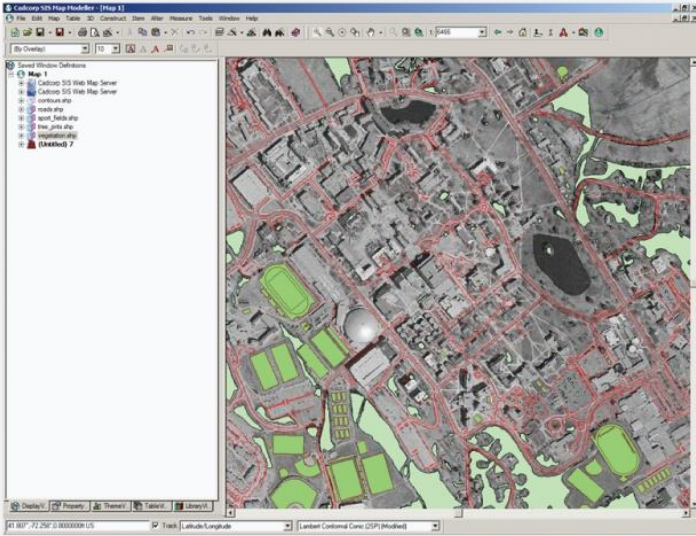


X	Skill Set	X	Cost Savings	X	Performance	X	Efficiency
Progeos Web Help Guide							

Progeos Web Help Integrating Online Data through Web Map Services

Web Map Services allow access to large datasets, saving costs on data production and storage.

Web Map Services (WMS) are available from many sources including state data centers, universities and regional government agencies. For example, Progeos powers the University of Connecticut's Map and Geographic Information Center's (MAGIC) WMS using the Cadcorp GeognoSIS web service. At MAGIC a variety of data, including georeferenced historical aerial photography and historical maps are accessed daily by GIS users around the world.



WMS allows for municipalities to access regional datasets without storing or managing large and complex local datasets

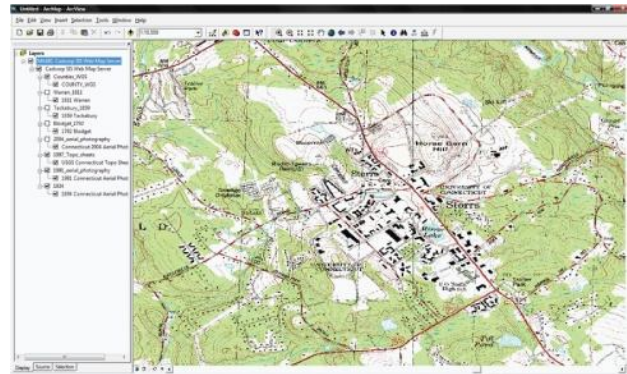
Adding WMS Data

WMS layers are stored as raster datasets which form a background or reference layer. Users can add their own data on top of a WMS layer within their GIS programs to create new, high value maps. By using several WMS layers, users can make comparisons over space and over time to provide valuable analysis and insights.

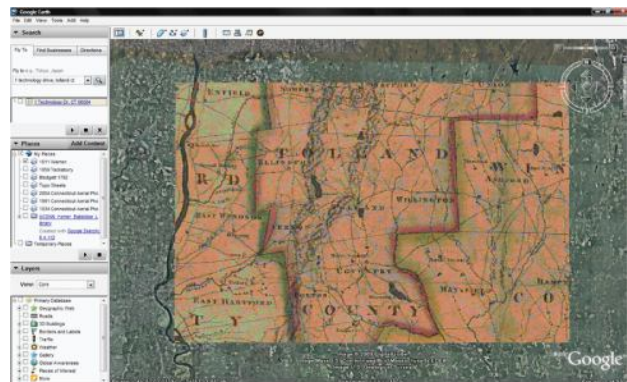
Creating new data from WMS data

Users can digitize new mapping data from the information provided by a WMS. First, add the WMS layer you wish to digitize data from. Second, create a new layer in Progeos Land Manager using the embedded Cadcorp Map Modeller. Users can then draw new information based on the data from the WMS layer. For example, a municipality may wish to create a layer of structures that existed in the 1800s. A Connecticut user could add a historical map of their town from the University of Connecticut Map and Geographic Information Center's WMS and digitize the buildings from the historical map into a new vector layer.

By using available WMS data from a reliable source, municipal departments can obtain valuable GIS data while saving countless dollars on data acquisition and data storage.



WMS data can be read into a variety of software including Cadcorp Map Modeller, ArcGIS, and Google Earth.



If you are a Progeos user view our "Integrating Online Data" podcast at www.progeos.com/webinars